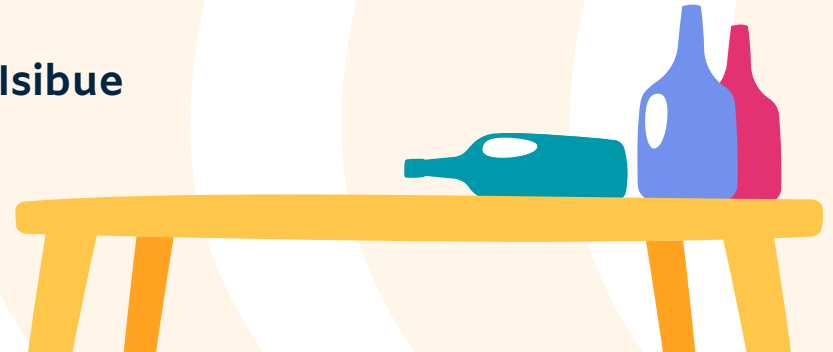




# Research Proposal: The Relationship Between Alcohol Use and Sexual Assault in College Age Men

Kaz Isibue



# Table of contents

**01**

**Introduction**

**04**

**Methodology**

**02**

**Literary Analysis**

**05**

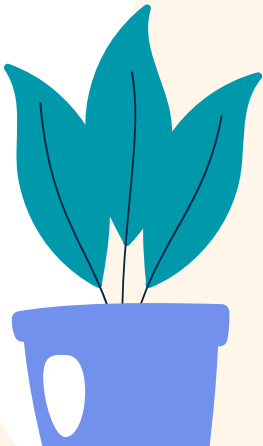
**Research  
Question**

**03**

**What's Missing**

**06**

**Summary**



The background features a series of concentric, light-colored ovals on a white background. Scattered around these ovals are several stylized bottle icons in various colors: blue, light blue, yellow, pink, and teal. The teal bottle is the largest and is positioned on the right side, partially cut off by the edge of the frame. The other bottles are smaller and arranged in a circular pattern around the central text.

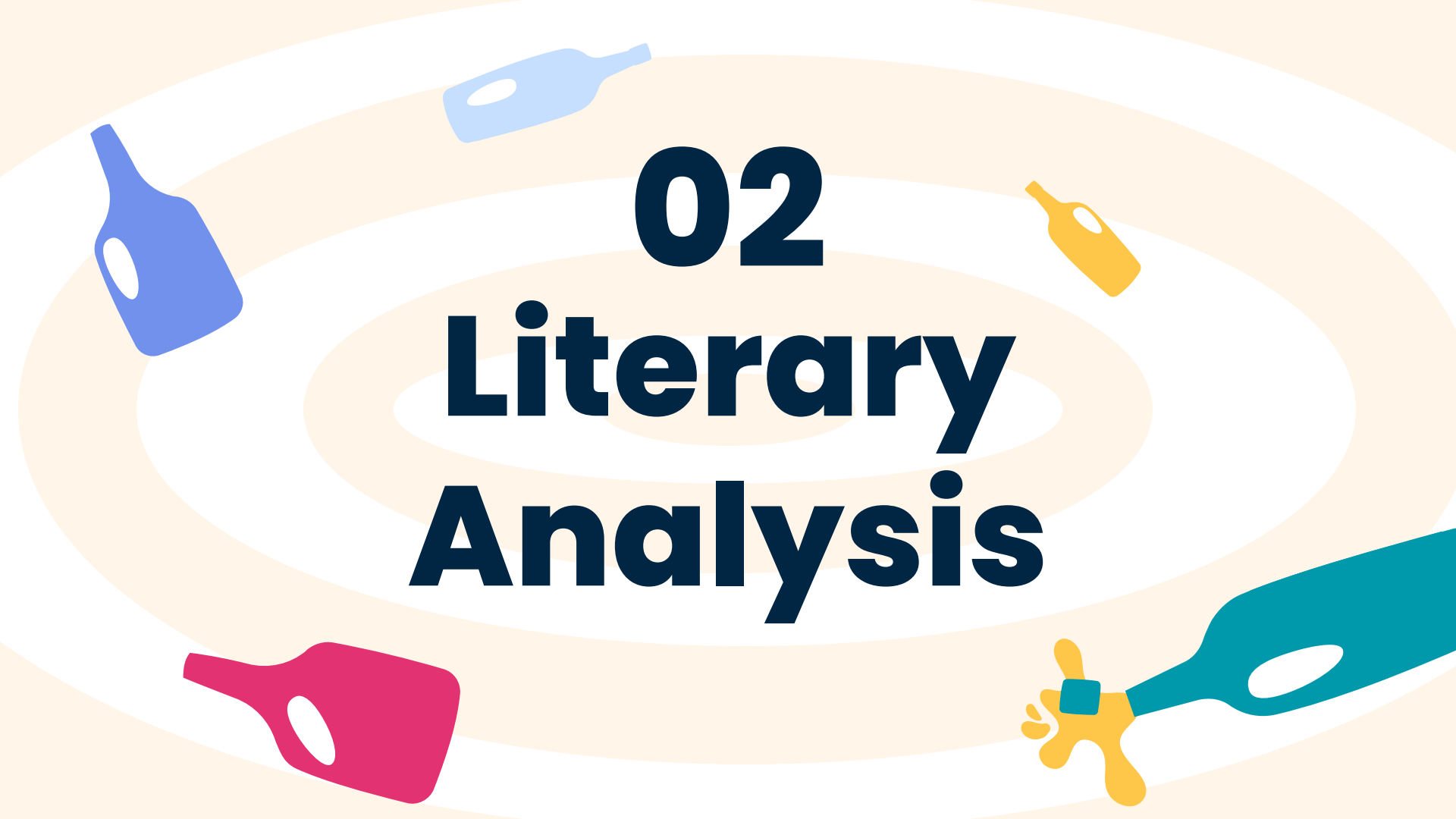
01

# Introduction

# Introduction



- **Between 47.5-87.3% of women reported having experienced some form of sexual assault, during or before their college career.**
- **Many reported assaults are thought to have been influenced by alcohol consumption.**
- **A majority of available data concerns solely cisgender, heteronormative couples.**
- **Very little data is available where a male partner is the victim of assault.**

The background features a series of concentric, light-colored ovals that create a sense of depth and movement. Scattered around these ovals are several stylized, colorful bottle icons in shades of blue, yellow, red, and teal. The central text is prominently displayed in a bold, dark blue font.

# 02

# Literary Analysis

# Literary Review

## **Effects of victim gender and physical vs. psychological trauma/injury on observers' perceptions of sexual assault and its aftereffects**

- How are victims of sexual assault viewed by their peers?
- 180 college students presented with a fabricated sexual assault report
- Most subjects suggest stricter punishments for victims of the same sex
- In most situations female victims shouldered more blame than male victims

## **Internalizing Symptoms, Alcohol Use, and Protective Behavioral Strategies: Associations with Regretted Sexual Experiences of College Students**

- Focuses on the relationship between alcohol use and regretted sexual experiences
- Study conducted with 1394 people, 804 females, 590 males.
- Asked questions about alcohol use, safety when drinking, sexual activity, regretted sexual experiences, anxiety, depression and suicidal thoughts.

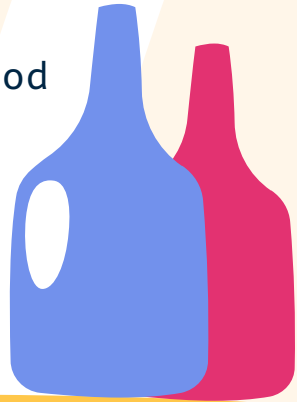
# Literary Review

## **A prospective study of sexual assault and alcohol use among first-year college women**

- Focuses on discovering a correlation between how often college students drink and their experience with sexual assault
- Researchers discovered drinking more does increase likelihood of assault
- Women under the influence are perceived as more willing to participate in risky sex

## **Sexual Assault, Alcohol Use, and Gender of Sexual Partners Among Cisgender Women Seeking Care at US College Health Centers, 2015-2018**

- Focuses on understanding relationship between gender of sexual partners, alcohol consumption, and likelihood of sexual assault
- Women with a history of assault were found more likely to participate in binge drinking activities





**03**  
**What's**  
**Missing?**



# Limitations of Previous Research

- Focuses primarily on cisgender, heteronormative relationships.
- Lack of research where the victim is male
- No research questioning males relationship with alcohol and the role they think it plays on sexual assault
- No Research discussing the stigma male victims face



# Limitation and Delimitation


## Limitation

- Hard to find subjects willing to participate
- Stigma surrounding male victims of assault
- Dishonest survey results out of shame or pride
- Feelings of being the only one who has experienced this

## Delimitation

- Offer some sort of compensation for participants
- Anonymous answering as an option
- A focus group where men can gather and discuss their experiences





04

# Methodology

# Definitions Pt 1



## Rape

“Use of the term rape is typically reserved for sexual acts that involve penetration obtained through force, threat of force, or verbal coercion or situations in which the victims is unable to give consent because of age, intoxication, or mental status.”

## Sexual Assault

Sexual assault is defined as “...unwanted sexual contact, attempted coercion, coercion, attempted rape and rape(,)” this can “ refer to a wide range of sexual acts, including fondling, kissing, and vaginal, oral, and anal penetration.”

# Definitions Pt 2

## Sexual Coercion

Sexual coercion can be defined as one of three types, positive, neutral, or negative. "Positive persuasion was sweet talking and was the least common form. Negative verbal persuasion consisted of threats to end the relationship or go elsewhere for sex, expressions of dissatisfaction with the woman or their sex life, use of verbal aggression such as swearing or putdowns, and attempts to elicit sympathy. The investigators placed nagging or pleading for sex without emotionally charged messages into the neutral classification."

## Sexual Contact

Sexual contact is defined as "Someone fondl(ing), kiss(ing), or rubb(ing) up against the private areas of (your) body (lips, breast/chest, crotch, or butt) or remov(ing) some of (your) clothes without (your) consent (but did not attempt sexual penetration)."



The background features a series of concentric, hand-drawn style circles in shades of light orange and cream. Scattered around these circles are several stylized bottle icons in various colors: blue, light blue, yellow, pink, and teal. The number '05' is prominently displayed at the top center in a large, dark blue font. Below it, the words 'Research' and 'Question' are stacked in a very large, bold, dark blue font.

# 05

# Research Question

**What is the relationship between sexual assault and alcohol use in male college students?**

# Main Survey Question Groups

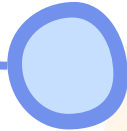


**1st  
group**



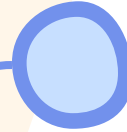
**Demographics**

**2nd  
group**



**Sexual  
Assault  
Experience**

**3rd  
group**



**Sexual  
Assault  
Actions**

**3rd  
group**



**Alcohol Use**

# Group 1: Demographics



## 1. Demographic Information

- a. What race(s) would you consider yourself?
- b. What age are you?
- c. What year of college are you in?
- d. What phrase would most honestly describe your sexuality?
- e. What phrase would most honestly describe your gender identity?



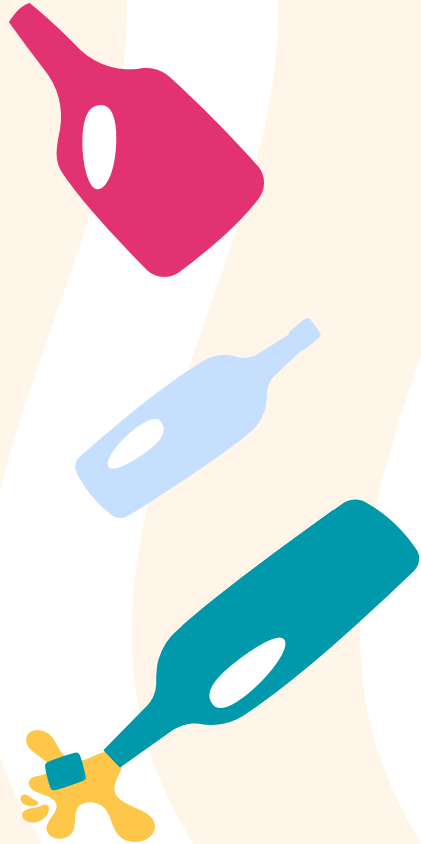
# Group 2: Sexual Assault Experiences

## 2. Sexual Assault Experiences

- a. Would you consider yourself a victim of rape?
- b. Would you consider yourself a victim of sexual assault?
- c. Have you ever been coerced into performing a sexual act?
- d. Have you ever heard of a sexual experience from a third party after having no recollection of it?
- e. Have you had an experience with sexual assault since first attending this university?
- f. Have you had an experience with sexual assault in the past month?



# Group 3: Sexual Assault Actions



## 3. Sexual Assault Actions

- a. Are you an assailant of rape?
- b. Are you an assailant of sexual assault?
- c. Have you ever coerced someone into performing a sexual act?
- d. Have you committed an act of sexual assault since first attending this university?
- e. Have you committed an act of sexual assault in the past month?
- f. Have you committed an act of rape since first attending this university?
- g. Have you committed an act of rape in the past month?

# Group 4: Alcohol Use



## 4. Alcohol Use

- a. How often do you drink?
- b. Do you consider yourself a heavy drinker?
- c. How would you describe your actions when you are intoxicated? (Emotional, Outgoing, Angry, Playful, Tired, Stressed, Lively, Etc.)
- d. How often do you remember your actions after being intoxicated?
- e. How often do you blame your behavior on drinking?
- f. Have you ever felt taken advantage of when under the influence of alcohol?
- g. Have you ever taken advantage of someone else while they were under the influence of alcohol?

# Group 4: Alcohol Use (Pt 2.)



## 4. Alcohol Use

- a. Have you ever been sexually assaulted when you were under the influence of alcohol?
- b. Have you ever sexually assaulted someone else while you were under the influence of alcohol?
- c. Have you had a sexual assault or rape experience related to alcohol use since first attending this university?
- d. Have you had a sexual assault or rape experience related to alcohol use in the past month?
- e. Have you ever used alcohol to justify your actions against another (sexual or nonsexual)?
- f. Has someone ever used alcohol to justify their actions against you?



06

**Summary**

# Summary



- A majority of available data concerns solely cisgender, heteronormative couples.
- When it comes to research about sexual assault male victims are a severely underrepresented group
- By discussing research like this we can help break the stigma surrounding male victims of assault

# Survey



# Works Cited

McCauley, H. L., Jones, K. A., Rofey, D. L., Reid, T. A., Miller, E., & Coulter, R. W. S. (2020). Sexual Assault, Alcohol Use, and Gender of Sexual Partners Among Cisgender Women Seeking Care at US College Health Centers, 2015-2018. *American Journal of Public Health*, 110(6), 850–856. <https://doi.org/10.2105/ajph.2020.305586>

Koss, M. P., Abbey, A., Campbell, R., Cook, S., Norris, J., Testa, M., Ullman, S., West, C., & White, J. (2007). Revising the SES: A collaborative process to improve assessment of sexual aggression and victimization. *Psychology of Women Quarterly*, 31(4), 357–370. <https://doi.org/10.1111/j.1471-6402.2007.00385.x>

Mouilso, E. R., Fischer, S., & Calhoun, K. S. (2012). A prospective study of sexual assault and alcohol use among first-year college women. *Violence and Victims*, 27(1), 78–94. <https://doi.org/10.1891/0886-6708.27.1.78>



# Works Cited

Peterson, R., Dvorak, R. D., Woerner, J., & Lewis, M. A. (2021). Internalizing symptoms, alcohol use, and protective behavioral strategies: Associations with regretted sexual experiences of college students. *Journal of Affective Disorders*, 283, 363–372. <https://doi.org/10.1016/j.jad.2021.01.077>

Schneider, L. J., Soh-Chiew Ee, J., & Aronson, H. (1994). Effects of victim gender and physical vs. psychological trauma/injury on observers' perceptions of sexual assault and its aftereffects. *Sex Roles*, 30(11-12), 793–808. <https://doi.org/10.1007/bf01544232>

The background features a series of concentric, light-colored ovals. Scattered around these ovals are several stylized bottle icons in various colors: a light blue bottle at the top, an orange bottle on the left, a yellow bottle in the center, a teal bottle at the bottom left, and a pink bottle with a yellow splash at the bottom right.

# Thanks!

**Do you have any questions?**

[Lisibue@siue.edu](mailto:Lisibue@siue.edu)

**CREDITS:** This presentation template was created by **Slidesgo**, including icons by **Flaticon**, infographics & images by **Freepik**